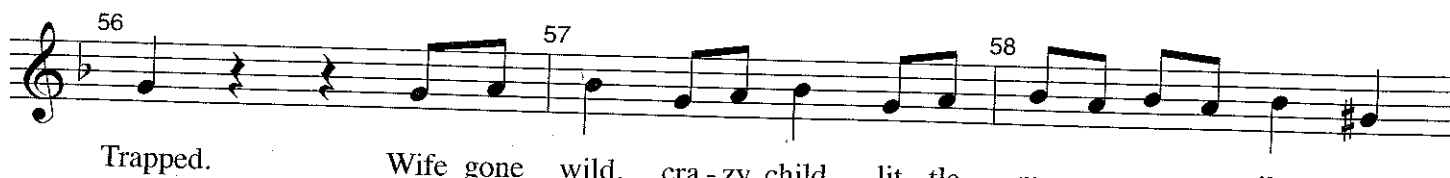
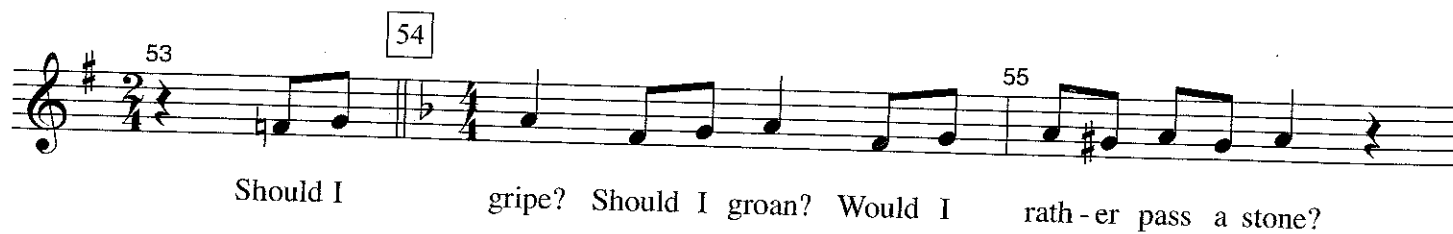
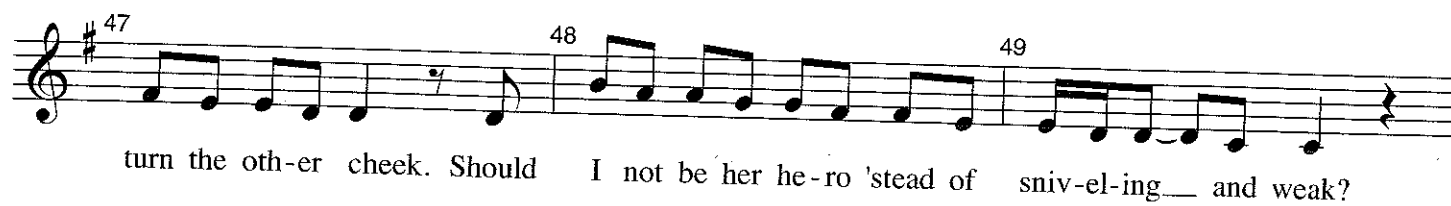
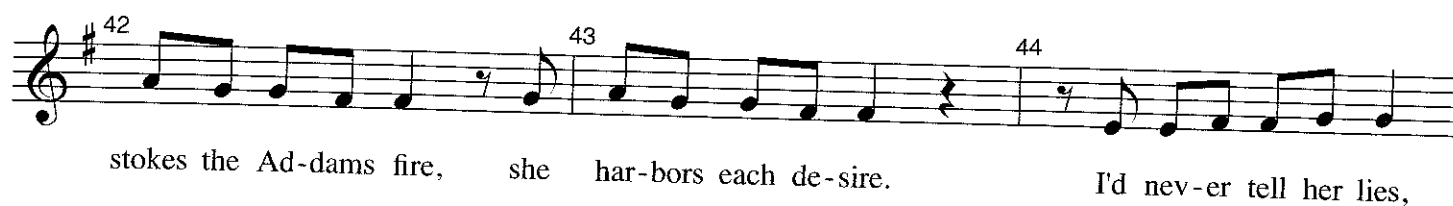
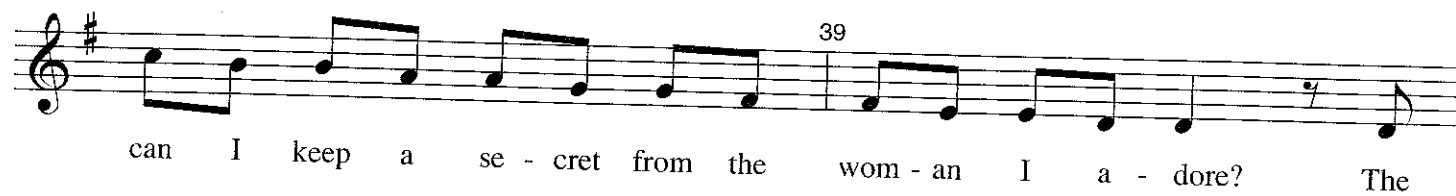
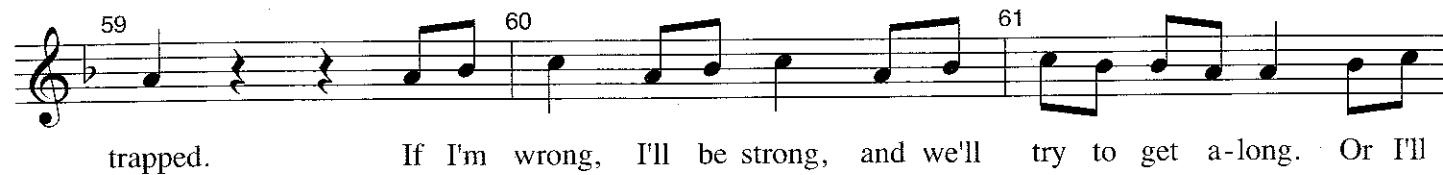
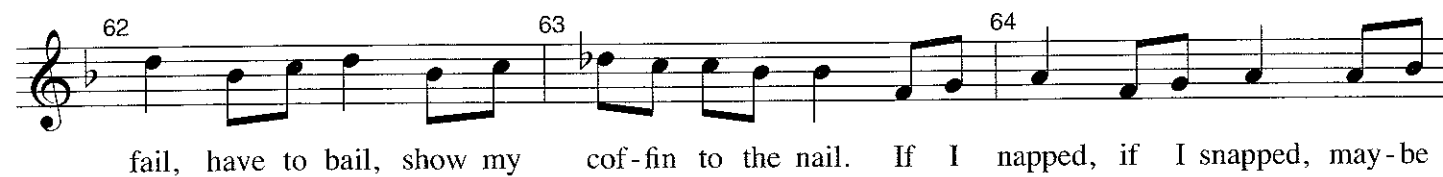


38 **Passionate**

**Drive to the End**



59 60 61  
trapped. If I'm wrong, I'll be strong, and we'll try to get a-long. Or I'll

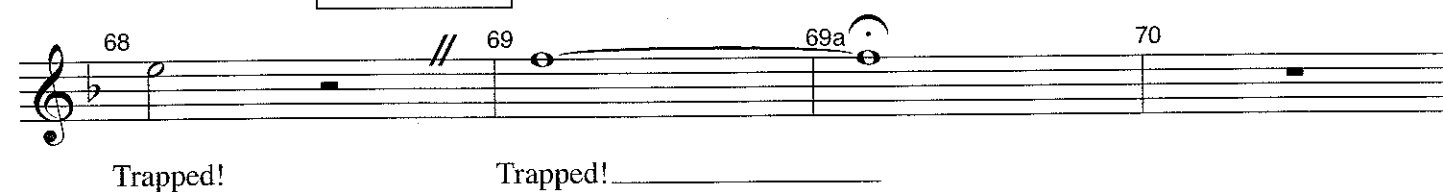


62 63 64  
fail, have to bail, show my cof-fin to the nail. If I napped, if I snapped, may-be



65 66 67  
din - ner would be scrapped then I would-n't be Trapped!

**Tassel business**



68 // 69 69a 70  
Trapped! Trapped! \_\_\_\_\_